

ABOUT ENERGY POVERTY IN TEXAS

Energy poverty describes a circumstance faced by many Americans in which the personal cost of consumption needed to maintain a healthy lifestyle creates a significant or unnecessary economic burden.

Energy Poverty Facts:

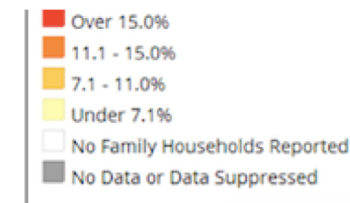
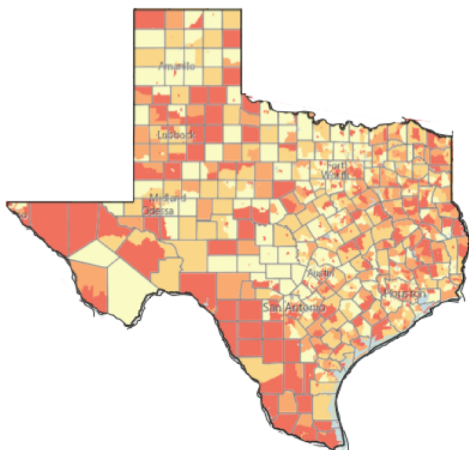
- 1 in 3 Texans (32.5%) are below 200% of the Federal Poverty Line¹
- Low income households pay significantly higher portion of income on energy costs²
- Households with children and elderly members are at greater risk³
- Lack of energy efficiency contributes to higher cost⁴
- Race/ethnicity and immigration status matter³
- Only 4.7% of the eligible population in Texas received aid from the Low-Income Home Energy Assistance Program in 2017⁵
- Effects include tradeoffs for basic necessities and adverse health consequences³

Energy burden is the percentage of annual household income spent to cover energy costs. LMI households are typically more likely to suffer from high energy burdens.

Energy Burden in Texas Cities



Households Below Federal Poverty Level



Community Commons, ACS 2008-2012

Reducing energy burdens can create economic opportunity in vulnerable communities.

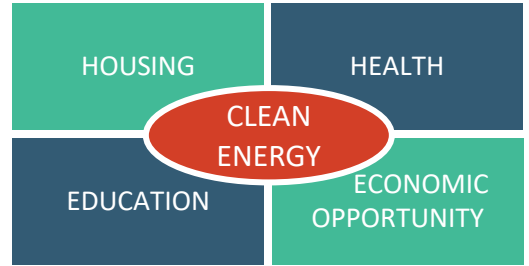


ADDRESSING ENERGY POVERTY IN TEXAS

Through unity of purpose we can leverage Texas' unique landscape and competencies for innovation to advance towards an equitable and inclusive clean energy future.

TARGET IMPACT AREAS

- Advance the role of distributed energy resources in addressing energy burden
- Reduce barriers to outreach and education
- Increase energy efficiency in low-income housing
- Address access to capital and credit barriers
- Pair crisis assistance with solutions that address root causes of energy poverty
- Leveraging federal, state, utility & philanthropic funding for greater impact



Our work explores distributed energy resources as a tool for social impact and economic development.

TEPRI INITIATIVES



RESEARCH & EVALUATION

- Low-Income Comm. Solar Program Design and Impact Study (Fall 2019)
- Texas Low Income Communities Energy Burden Profile Report (Fall 2018)



STAKEHOLDER DECISION TOOLS

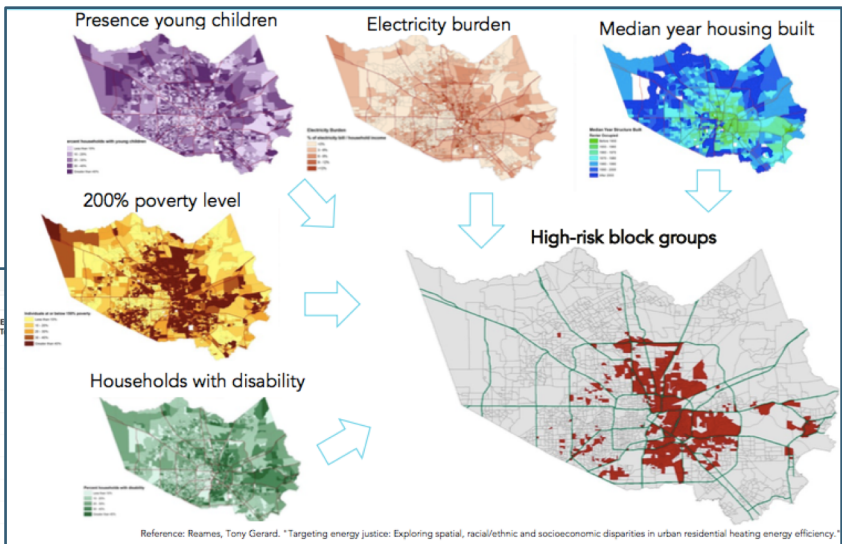
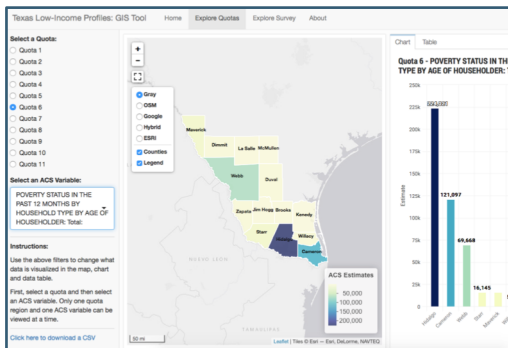
- Energy Poverty Resource Clearinghouse (Fall 2018)
- Energy Poverty Risk Targeting Tool (Spring 2019)



STAKEHOLDER FORUMS

- Research Advisory Committee (Fall 2018)
- Energy and Housing Advisory Committee (Spring 2019)

Example output and interface of Energy Poverty Risk Mapping Tool



ABOUT TEPRI

The Texas Energy Poverty Research Institute is a collaboration of poverty and energy stakeholders working to inspire lasting energy solutions for low-income communities. We are a 501c3 non-profit based in Austin, and our research explores best practices in effective program design, policy evaluation, funding and financing for energy solutions.

